

TORLYS

Smart Trims



Multi Function Transition Moulding
Moulure de transition multifonction

The TORLYS Smart Trim Multi-Function Transition Moulding offers an easy solution to finish your floor:

- Use as a **T-moulding** to connect two floors of similar height, in door openings, or in rooms where the length or width of the floor exceeds the product's maximum span.
- Use as a **Reducer** to make the transition between two different floor heights.
- Use as an **End profile** to finish the edge of a floor against a vertical surface such as cabinet toe kicks, sliding doors, a tile floor, etc.
- Use as an **Alternative Transition Solution** to make the transition to Carpet.

INSTALLATION GUIDELINES

Use a polymer adhesive such as LePage® No More Nails Heavy Duty construction adhesive (or equivalent) to attach the track or the moulding to the subfloor. Be sure to apply adhesive according to the table below and ensure that adequate expansion space is maintained.

4 APPLICATIONS



T-moulding



Reducer



End profile

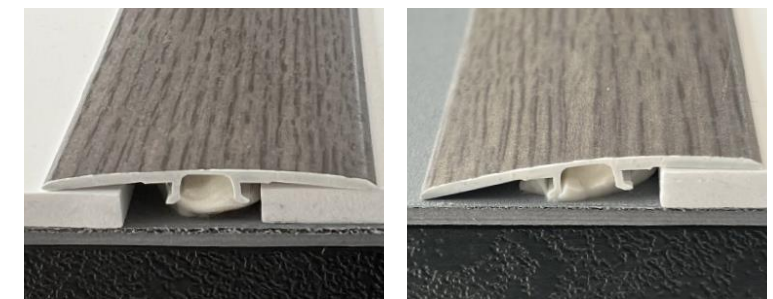


Alternative Transition Solution

Flooring Thickness	Track	Adhesive Application
4.5 mm / 5 mm	No track	Apply a medium bead of adhesive in the U-channel. Note: for a reducer, it is recommended that the moulding be <i>carefully bent</i> prior to applying adhesive.
5.5 mm - 9.5 mm	Grey track	Apply a small to medium bead of adhesive to the back of the track proportionate to the space that needs to be filled. Note: thicker products need larger beads.
>9.5 mm	Black track	Apply a small to medium bead of adhesive to the back of the track proportionate to the space that needs to be filled. Note: thicker products need larger beads.

For T-moulding or Reducer without track:

With proper application, the adhesive should fill the U-channel as pictured.



IMPORTANT: Because the temperature and humidity level in any area can vary, for example between summer and winter, it is necessary that the floor has room to expand and contract at all vertical obstructions. Therefore, an expansion space is needed around the perimeter of the floor. Refer to your flooring installation instructions for the correct expansion gap for the floor you are installing.

CAUTION: Always wear protective gloves – after cutting, the edges of the profile and tracks can be sharp.

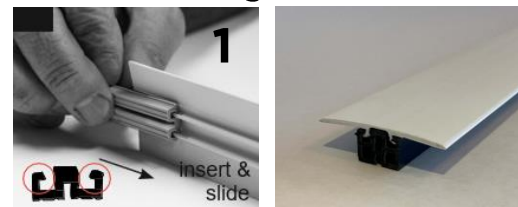
For T-moulding or Reducer with track:

Begin by breaking apart the two sides of the track as shown in the pictures below. Bending the track back and forth a few times will help to break the score lines and make separation easier.



To form the *T-moulding*, slide the trim into the channel of **Track A (1)**. To form the *Reducer*, slide the trim into the higher channel of **Track B**, then snap the trim into the lower channel (2) which will physically bend the moulding to form the shape:

A -T-moulding



B -Reducer



When fastening the Smart Trim to the subfloor, use track and apply adhesive based on the thickness of the floor according to the table above.

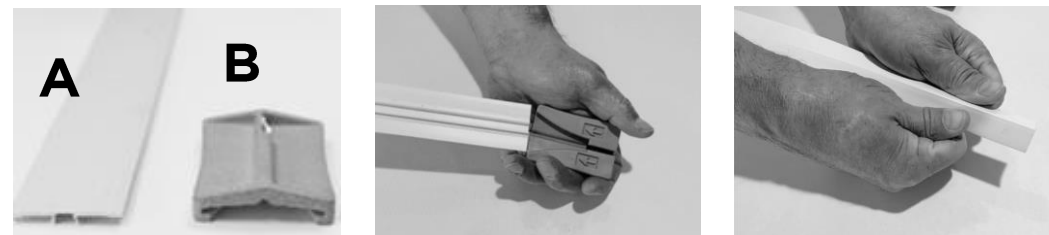
IMPORTANT:
Trim is attached to the track prior to fastening to the subfloor.



For End profile:

IMPORTANT: the cutter and clips used to form the *End profile* are sold separately.

The trim is separated along the length into two pieces by inserting the moulding (A) into the wide, open end of the cutter (B) and pulling in the direction of the arrows. The cutter scores the moulding, which is then snapped apart.



Remove any unevenness and/or sharp points on the edge of the cut profile with a sanding block

The *End profile* is not mechanically fastened to the floor. Instead, the clips (C), when snapped into the trim as pictured below hold the end moulding in place inside the perimeter expansion space using pressure:



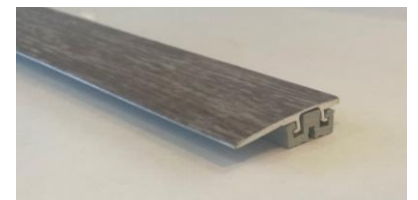
For Alternative Transition Solution for Carpet:

Install the floor as normal. Attach the track to the trim and mark the track in relation. Remove the track from the trim and, using a straight edge, score the trim along your marks. Split the trim along this scored line and remove the side of the trim that is not required.



Reinsert the track into the trim to create the *Alternative Transition Solution for Carpet*:

When fastening the profile to the subfloor, apply adhesive to the underside of the track based on the thickness of the floor according to the table found on page 1. Press the trim down firmly against the installed floor, ensuring the glue makes contact.



IMPORTANT:
Trim is attached to the track prior to fastening to the subfloor.

Allow the required time for the adhesive to fully set. Nail in the carpet tack strip and add carpet underlay. Place carpet and tuck the edge beneath the profile of the *Alternative Transition Solution for Carpet*.

